



Health & Wellness Alliance for Children

Executive Briefing Notes

The Alliance

Who We Are

We are an organized and engaged group of community stakeholders who are working together to align around a common agenda for **positive change**

**Social
Service
Organizations
& Ministries**

**Business
Community**

**School
Districts**

**Healthcare
Providers
and Systems**

**Federal and
Local
Government
Agencies**

Steering Committee Members

Julie Bagley

President Elect
Junior League of Dallas

Cheryl Boswell

VP, Membership & Marketing
YMCA of Dallas

Brent A. Brown

Director
bcWorkshop

Bill Dawkins

Chief Financial Officer
H.I.S. Bridgebuilders

Jennifer Edwards

Performance Improvement Mgr.
Dallas Co. Health & Human Svcs.

Rebecca Gruchalla, M.D.

Prof. of Medicine & Pediatrics, UTSW
Div. Dir. Allergy & Immunology
Children's Medical Center of Dallas

Susan Hoff

Chief Strategy Officer
United Way of Metropolitan Dallas

James E. Huckaby

Administrative Officer, Ops/Risk Mgmt.

Mesquite ISD

Larry James

President & CEO
CitySquare

Suzanne Kubelka

Director, Health Svcs.
DISD

Tori Mannes

President & CEO
Child Care Group

Leonor Marquez

CEO
Los Barrios Unidos Comm. Clinic

John Martinez

President
Regional Hispanic Contractors Assoc.

Kim McGrew

Wellness Coordinator
The Potter's House

Cynthia Mickens

Founder and CEO
Cynthia Mickens Ministries

Mike Pettitt

Pastor

North Mesquite Assembly of God

Sue Pickens

Director, Population Medicine
Parkland Health & Hospital System

Peter Roberts**

EVP, Population Health & Network Dev.
Children's Medical Center of Dallas

Michael Samuelson*

Sr. Consultant Population Health
Samuelson Health and Wellness Solutions

Dr. Eduardo Sanchez**

Deputy CMO
American Heart Association

Paula Selzer

Regional Coordinator
Children's Environmental Health
US Environmental Protection Agency Reg. 6

John Siburt

VP of Programs
CitySquare

Joyce Tapley

CEO
The Martin Luther King, Jr. Family Clinic

Anne Thomas

Executive Director
AVANCE Dallas

Candace M. Thompson

Community Outreach Manager
Jubilee Park & Community Center

Larry Tubb

SVP, System Planning

**Interim Executive Director*

***Steering Committee Co-Chair*

The Alliance Justification

Underlying Concerns & Drivers

- 18% of kids in Dallas County are **uninsured**
- 28% of kids in Dallas County are **hungry and malnourished**
- 12% **gap in standardized test scores** between poor and middle class kids

Source: Beyond ABC – Children's Medical Center report

The Alliance Justification

Underlying Concerns & Drivers

- 29% of kids **live below the poverty line** in Dallas County
- expensive, and mostly unnecessary, **use of emergency departments on the rise**
- Increased **dependency on social services**

Source: Beyond ABC – Children's Medical Center Report

Some of Our Guiding Principles

What We Believe

1. We believe that all children deserve **access to health**, which includes access to medical care as well as the other opportunities and resources that support health.
2. We believe that a **child's health has value** to his or her community, family, and self.
3. We believe that a **child's health is influenced by factors beyond those under his or her control**, including society, environment, family, education, and health systems, creating disparities in society.

Some of Our Guiding Principles

What We Believe

4. We strive for **long-term commitment of time, effort, and funds** to the work of this Alliance and **long-term solutions** that engage the members of the community in achieving change for our children.
5. We respect the **different perspectives, resources, and expertise of all of our partners**, recognizing that no one individual or organization can effect transformational change in the lives of children in the community.
6. We believe in **developing solutions that honor the diversity of the people in community**, free of judgment and with appreciation for culture, language, and belief.

The Alliance Approach

Collective Impact Model

Common Agenda

all participants have a **shared vision for change** including a common understanding of the problem and a joint approach to solving it through agreed upon actions

Shared Measurement

collecting data and measuring results consistently across all participants ensures efforts remain aligned and participants hold each other accountable

Mutually Reinforcing Activities

participant activities must be differentiated while still being coordinated through a mutually reinforcing plan of action

Continuous Communication

consistent and open communication is needed across the many players to build trust, assure mutual objectives, and appreciate common motivation

Backbone Support

creating and managing collective impact requires a **separate organization(s)** with staff and a specific set of skills to **serve as the backbone for the entire initiative and coordinate participating organizations and agencies**

The Alliance FOCUS

Initial Focus - Asthma

- Reducing the burden of asthma on our children, families, community, and hospitals, with a particular focus on eliminating disparities in society.
- Influencing factors outside of hospital care, including the social determinants of health, preventive care, and health literacy.

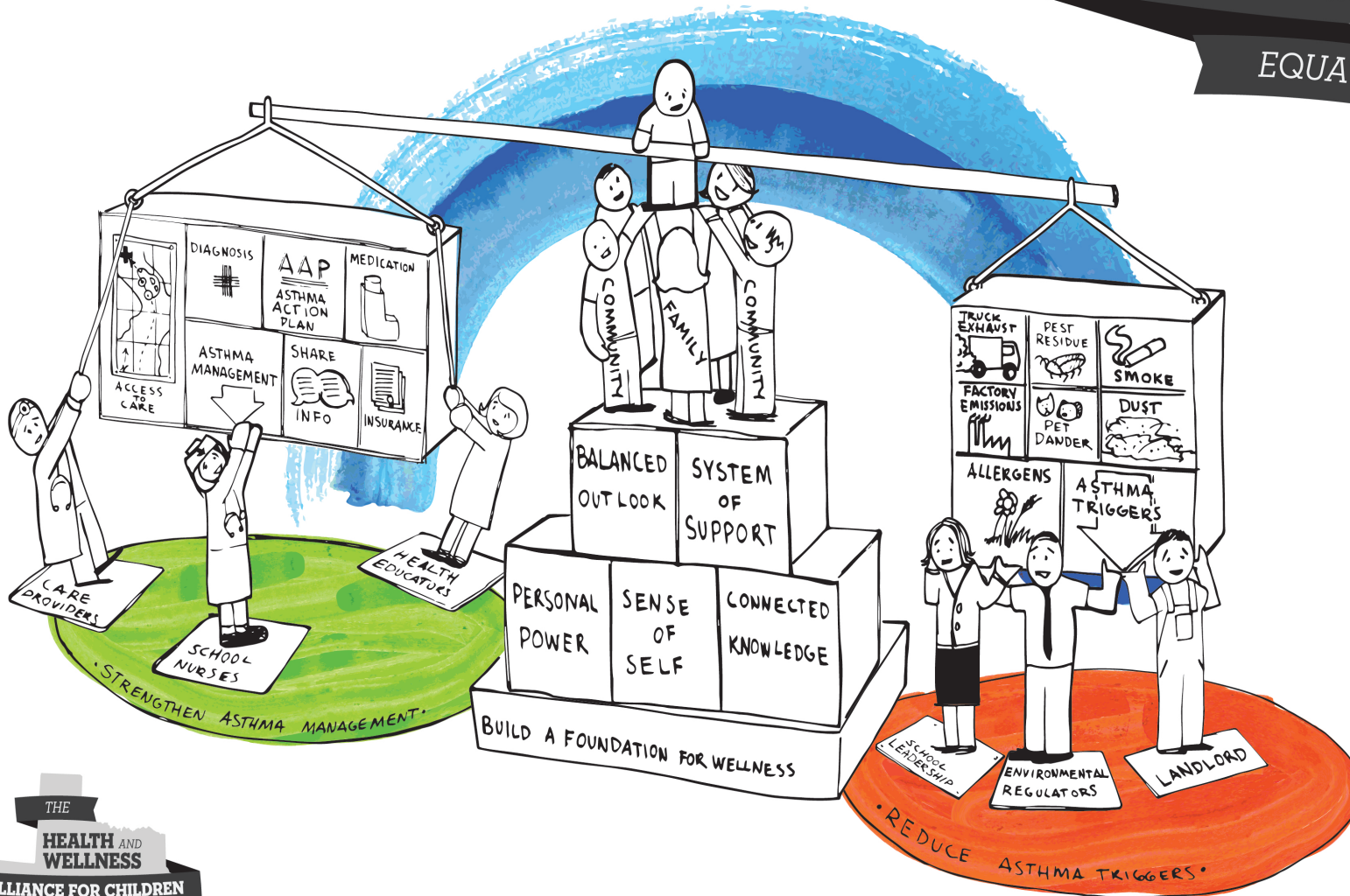
Our Goal

Success is defined as that point in time when...

Every child with asthma achieves their fullest health, wellbeing, and potential.

ASTHMA WELLNESS

EQUATION



The Alliance Structure

Steering Committee

Working Groups

Asthma-Friendly
Physical
Environments

Access to
Care

High Quality
Health Care

Equipping
Children and
Families

Support Groups

Policy

Data

BACKBONE

BACKBONE

The Alliance Success

Future Accomplishments

- Remove Barriers for Families to Access and Pay for the Necessary Care and Medications They Need to Manage Asthma.
- Create a Sense of Awareness and Power Among Children and Families Regarding Asthma Management.
- Create Safe Places for Children to Live, Learn, and Play Free from Asthma Triggers.
- Ensure That All Providers Have Accessible and Consistent Information about Childhood Asthma Management to Coordinate Care.

The Alliance Success

Sample Metrics

- Reduce unnecessary visits to Emergency Rooms for asthma crises.
- Increase availability and compliance with asthma medication.
- Increase access to health insurance coverage.
- Ensure that every child has and uses a medical home.



Health & Wellness Alliance for Children

For additional information please contact :

Charmin Taylor

Program Coordinator

Health and Wellness Alliance for Children

Children's Medical Center

1935 Medical District Drive, F3.24 | Dallas, TX 75235

Office: 214.456.5120 | *Fax:* 214.456.8959

Email: charmin.taylor@childrens.com